

## 33<sup>rd</sup> annual Tournament Of Young Talents

We kindly invite you to participate in 33<sup>rd</sup> annual Tournament Of Young Talents in which we traditionally strive for keeping the top chess, sports and social level.

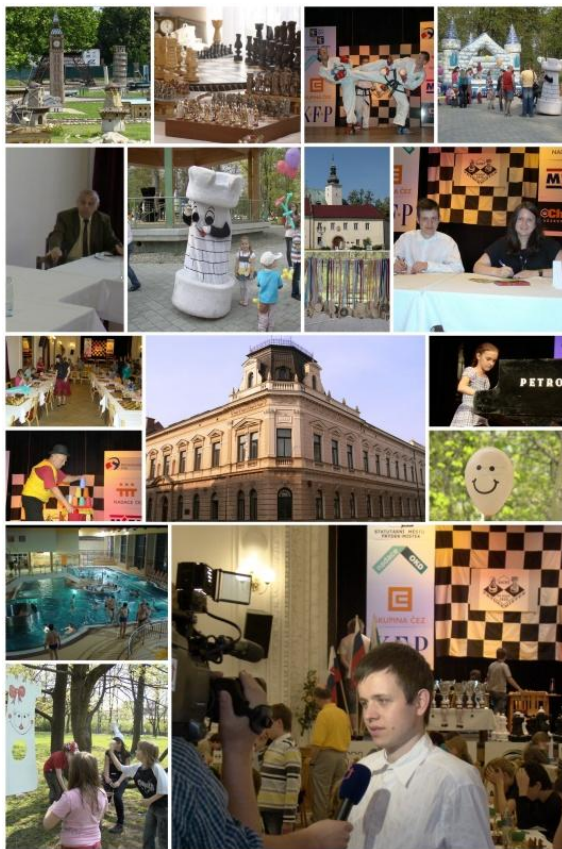
The tournament is restrainedly considered as the fundamental one of all the tournaments organized by the Beskydská šachová škola. Therefore we'd like to introduce you new series of tournaments with increase in FIDE ELO rating – tournaments for children up to 9, 12 and 15 years, Pobeskydi Open, closed tournaments.

### Former participants of the tournament:

Radjabov T. (2752), Movsesian S. (2715), Navara D. (2705), Azarov S., Howell D., Socko M., Zhukova N., Jackova J., Nemcova K. and other players from 25 countries

Kindly pay your attention to wide associated program in which the best czech chess player David Navara promised to take part. During the tournament you will also have an opportunity to meet other chess personalities as a surprise.

There will be also afternoon program for children prepared including performances, simultaneous exhibitions, blindfold game, table games and other attractions.



## 33<sup>rd</sup> annual Tournament Of Young Talents

### TOURNAMENT OF YOUNG TALENTS

**Date:** 5<sup>th</sup> – 9<sup>th</sup> April 2012

**Arbiter:** Surma Martin – main arbiter

**Registration in National House:** Wed 4.4. 16:00 – 22:00  
Thu 5.4. 07:00 – 08:15

#### Categories:

- up to 9 years (born 2003 and younger), B+G (separate result announcement)
- up to 12 years (born 2000 and younger), B+G (separate result announcement)
- up to 15 years (born 1997 and younger), B+G (separate result announcement)

#### System:

- waiting time is 1 hour
- 8 rounds, swiss system with increase in FIDE rating
- 90 minutes per game + 30 seconds per move

**Ranking:** Gained points, mutual games, Buchholz without the worse, wins, lot

**Time schedule:** opening in 8:45 in the Main hall of NH

5.4. (Thu) - 1<sup>st</sup> round 09:00 - 2<sup>nd</sup> round 15:00  
6.4. (Fri) - 3<sup>rd</sup> round 09:00 - 4<sup>th</sup> round 15:00  
7.4. (Sat) - 5<sup>th</sup> round 09:00 - associated program  
8.4. (Sun) - 6<sup>th</sup> round 09:00 - 7<sup>th</sup> round 15:00  
9.4. (Mon) - 8<sup>th</sup> round 08:00 (!)  
- Closing ceremony 13:00 - 14:15 Main hall of NH

#### Prizes fund TOYT: CZK 30 000

- material prizes for the first 5 boys from each category + tombola  
- material prizes for the first 4 girls from each category + tombola

**Team competition:** List of 6 players (players from one category allowed) is to be announced to main arbiter by head of the club (region, country) by Thursday 7 p.m. at the latest. For final result 4 best players from each team are taken into account.

**Entry fee:** CZK 400 per participant for all categories  
CZK 100 less if entered by 16.3.2012

#### DISCOUNTS (chose one, do not cumulate)

- CZK 100** for participants in MCR of Youth 2012
- CZK 200** for players named in list of talents KM SSCR
- CZK 500** on accommodation for medallists in national classic chess championships

**Registration forms:** at [m.kocur@chessfm.cz](mailto:m.kocur@chessfm.cz) by **16.3. 2012**

- shall include name, surname, birth date, ELO, club, tournament category, accommodation and board requirements, phone No.  
- If your e-mail is not answered within 3 days, please call us

#### Information:

Jasny Stanislav, +420 723 239 987; [s.jasny@seznam.cz](mailto:s.jasny@seznam.cz) (English)  
Benco Pavel, +420 775 295 000; [p.benco@chessfm.cz](mailto:p.benco@chessfm.cz) (German)

## 33<sup>rd</sup> annual Tournament Of Young Talents

### POBESKYDI (GM, IM, OPEN)

**Date:** - Pobeskydi GM: 2<sup>nd</sup> – 9<sup>th</sup> April 2012  
- Pobeskydi IM: 2<sup>nd</sup> – 9<sup>th</sup> April 2012  
- Pobeskydi OPEN: 5<sup>th</sup> – 9<sup>th</sup> April 2012

**Arbiter:** IA Talla Vladimír, FA Záruba Petr

#### Registration in National House:

- Wed 4.4. 16:00 – 22:00
- Thu 5.4. 07:00 – 08:15

GM, IM individually by e-mail

#### System:

1 hour waiting time for all Pobeskydi tournaments  
GM+IM: 90 min/40 moves + 30 min till end + 30 sec per move  
OPEN: 90 min for game + 30 sec per move

#### Time schedule for OPEN Pobeskydi:

5.4. (Thu) - 1<sup>st</sup> round 09:00 - 2<sup>nd</sup> round 15:00  
6.4. (Fri) - 3<sup>rd</sup> round 09:00 - 4<sup>th</sup> round 15:00  
7.4. (Sat) - 5<sup>th</sup> round 09:00 - 6<sup>th</sup> round 15:00  
8.4. (Sun) - 7<sup>th</sup> round 09:00 - 8<sup>th</sup> round 15:00  
9.4. (Mon) - 9<sup>th</sup> round 08:00 (!)  
- Ending around 13:00 in playing room

#### Prizes fund for OPEN Pobeskydi:

- CZK 30 000 is guaranteed for at least 80 players
- Prizing system: Hort's system

1<sup>st</sup> prize CZK 7 000 / 2<sup>nd</sup> prize CZK 5 500 / 3<sup>rd</sup> prize CZK 4 000  
4<sup>th</sup> prize CZK 3 000 / 5<sup>th</sup> prize CZK 2 000 / 6<sup>th</sup> prize CZK 1 500  
7<sup>th</sup> prize CZK 1 200 / 8<sup>th</sup> prize CZK 1 000 / 9<sup>th</sup> prize CZK 800

The best player:

without FIDE ELO / up to 18 yrs / woman / senior → CZK 1 000

#### Entry fee:

- GM, IM: depending on agreement with organizer
- OPEN: depending on FIDE ELO

2300 and more - CZK 300      2200 and more - CZK 350  
2100 and more - CZK 450      2000 and more - CZK 500  
1900 and more - CZK 550      under 1900 - CZK 600

- Without FIDE - CZK 700
- Entry fee reduced by CZK 100 for players born 1994-1996

**Registration forms:** at [m.kocur@chessfm.cz](mailto:m.kocur@chessfm.cz) by **16.3. 2012**

- shall include name, surname, FIDE ELO, club, accommodation and board requirements, phone No.  
- If your e-mail is not answered within 3 days, please call us

#### Tournament manager:

Kocur Martin, (+420) 732 224 966; [m.kocur@chessfm.cz](mailto:m.kocur@chessfm.cz)

#### Information concerning closed tournaments:

Talla Vladimír, (+420) 608 468 895; [vladimir\\_talla@volny.cz](mailto:vladimir_talla@volny.cz)

## GENERAL INFORMATION

**Organizer:** Beskydská šachová škola Frýdek-Místek  
Středisko volného času KLÍČ

**Place:** National House Frydek-Mistek  
ul. Palackeho 134, 738 01 Frydek-Mistek

**Accommodation:** bookings at [m.kocur@chessfm.cz](mailto:m.kocur@chessfm.cz)

- we offer good-quality accommodation at a reasonable price  
- organizer reserves the right to make changes till 30.01.2012

### Hotel Centrum (prices funded by the hotel)

- [www.hcentrum.cz](http://www.hcentrum.cz)  
- 10 minutes from the playing room (bathroom included)  
▪ double room CZK 800/night/room breakfast included  
▪ triple room (extra bed) CZK 1200/night breakfast incl.

### Hostel Paskov

- [www.rpgcommercial.cz](http://www.rpgcommercial.cz)  
- 10 minutes from the playing room (bathroom included)  
▪ double room CZK 450/night/room  
▪ double room CZK 600/night/room with TV

### Modern hotel Africa (prices highly funded by the hotel)

- [www.hotel-afrika.cz](http://www.hotel-afrika.cz)  
- 20 minutes from the playing room (bathroom, Wi-Fi and TV included), restricted capacity  
▪ double room CZK 1 040/night/room  
▪ triple room CZK 1560/night/room

### Board:

▪ **Hotel Centrum**  
- Breakfast included in the price of accommodation  
- Buffet breakfast CZK 50; dinner CZK 70; supper CZK 100

▪ **National House**  
Breakfast CZK 55; dinner CZK 90; supper CZK 90

## ASSOCIATED PROGRAM

- *The best czech player David Navara – simultaneous exhibition, discussion and autographing*
- *Discussion with czech chess personalities*
- *Blindfold chess provided by BŠŠ players*
- *Chess game with the TOP BŠŠ pre-school children*
- *VIP tournament*
- *Chess sets exhibition*
- *Afternoon entertaining program*
- *Evening show with cultural program*
- *Aquapark Olešná*
- *Miss TOYT 2012*
- *on-line chess transmission of children up to 9, 12, 15 yrs*

# BŠŠ thanks to



**33 RD**

# TOURNAMENT OF YOUNG TALENTS

**5TH - 9TH APRIL 2012**

**BASIC INFORMATION:**

- NÁRODNÍ DŮM
- FRÝDEK-MÍSTEK, CZ

**CATEGORIES:**

- U9, U12, U15
- FIDE
- OPEN POBESKYDI

**WWW.CHESSFM.CZ**

- IM AND GM TOURNAMENTS